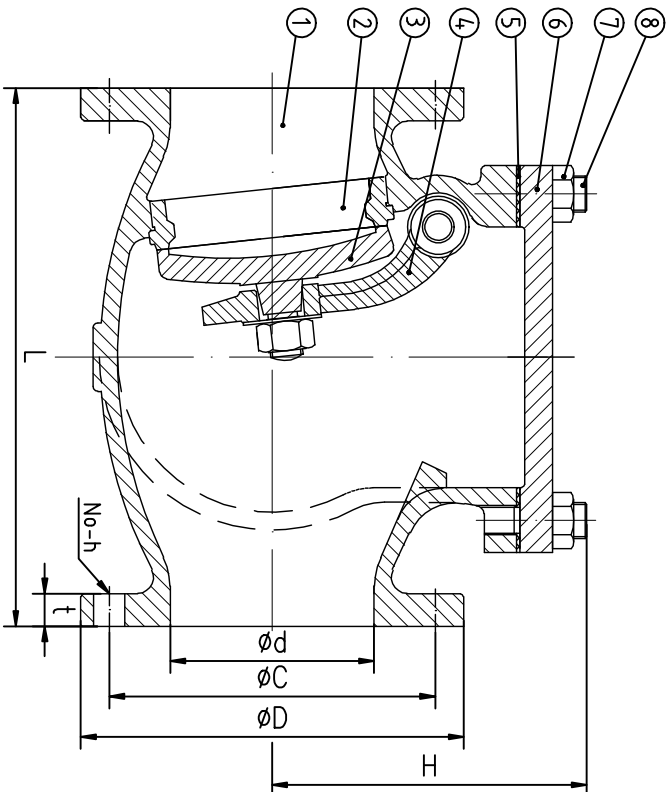




® Marine Cast Iron Lift Check Globe Valves 10K



DN	d	L	D	C	No-h	t	H	a
50	50	210	155	120	4-19	20	109	10
65	65	240	175	140	4-19	22	126	11
80	80	270	185	150	8-19	22	136	11
100	100	300	210	175	8-19	24	153	12
125	125	350	250	210	8-23	24	180	13
150	150	400	280	240	8-23	26	205	14
200	200	480	330	290	12-23	26	242	17

### Technical Specification

Nominal Pressure	Strength testing pressure	Seat testing pressure
10K	2.1MPa	1.54MPa

8	Double Open end Bolt	Q235A	
7	Nut	Q235A	
6	Cover	HT200	
5	Asbestos Free	Expanded graphite	
4	Rocker	H62	
3	Disc	ZCuSn5PB5Zn5	
2	Sealing Ring	ZCuSn5PB5Zn5	
1	Body	HT200	
NO.	Description	Material	Remark
Note	Handle NO.	Sign	Date
Design	Fukewei	Review	
Calibrator	Fukewei	Approver	
Process		Date	2015.1.31
DRAWING			JIS 7373-10K
A total of 1 first			Note QTY Proportion
Qingdao V-gate Marine Valve Manufacturing Co.,LTD.			