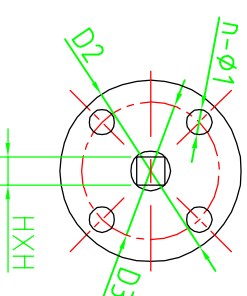


TOP FLANGE



NO.	NAME	MATERIAL	QTY
10	Lever	Malleable Iron	1
9	Indicator	Carbon Steel	1
8	Short Bushing	PTFE	2
7	O-Ring	NBR	1
6	Long Bushing	PTFE	2
5	Seat	EPDM	1
4	Taper Pin	SS410	2
3	Disc	DI	1
2	Shaft	SS410	1
1	Body	CI	1

TEST PRESSURE	SHELL	SEAL
AIR	24 Bar	18 Bar
HYDROSTATIC		

DESIGN CODE	API 609
INSPECTION & TEST	API 598
END STANDARD	ASME B16.5 150LB
FACE TO FACE	API 609

TITLE :HANDLE LUGGED BUTTERFLY VALVE	6"-8"
--------------------------------------	-------

APPROVED		DWG NO.		REV	
CHECKED					
DRAWN					
DESIGNED		SCALE		UNIT	mm

Qingdao V-Goal Marine Valve Manufacturing Co., Ltd.

SIZE	A	B	C	D	φ2	ISO5211	D2	D3	n-φ1	L	D1	n-Uh	&°	HXH
6"	226	139	55.8	155.6	18.92	F07	90	70	4-10	30	24.13	8-3/4"	4.5	14X14
8"	260	175	60.6	202.5	22.10	F10	125	102	4-12	40	298.5	8-3/4"	4.5	17X17